

## Project at a Glance

<b>Project Name</b>	: CIRCLE <b>Anchor Bay</b>
<b>Location</b>	: Plot # 307, Road # 13, Savar DOHS, Dhaka
<b>Cantt Board Approval No.</b>	: সাক্যাবো/ডিওএইচএস/৩০৭/১৬, নির্মান অনুমোদন নম্বর : ৪৫৯, (তারিখ : ০৯/০৯/২০২৫)
<b>Land Area</b>	: 5.00 Katha
<b>Project type</b>	: Residential
<b>Apartment nos</b>	: 12 nos
<b>Storied</b>	: (G+8) 09 storied Building
<b>Parking</b>	: 12 Nos
<b>Facing</b>	: North
<b>Apartment Type &amp; Sizes</b>	: Type A - 1350 sft & Type B - 1350 sft (1st - 4th Floor) & Type A - 2700 sft. (5th - 8th Floor)

## Special Features

### FEATURES OF GROUND FLOOR

#### ENTRY

- Secured gateway with decorative lamps and Name and address of the Complex & attractive Landscape.
- Spacious entrance and good driveway.

#### RECEPTION AREA

- Spacious lobby with Homogeneous mirror polish tiles floor.
- Decorative reception area with Reception desk.
- Homogeneous mirror polish tiles in reception floor and lobby.
- Logo of the Complex on nicely arranged glass plate.
- Keyboard for common area for key preservation.
- Letter Box.

#### PABX SYSTEM

- Elaborate PABX System to connect each flat from the reception desk or guard post.

#### CAR PARKING

- Car Parking will be clearly defined and marked with owner's space numbers to avoid any confusion and to ensure comfortable exit and entry.

- Border color paving tiles in at driveway and other some open spaces (excluding car park space) in the ground floor will be provided.

#### SECURITY ARRANGEMENT

- Guard post with intercom connection for 24 hours security.
- Effectively secured boundary walls & grills to protect unexpected entry & exit.
- Guard room.
- Toilet for Drivers and association's staff.

#### GENERAL AMENITIES

- One standby Emergency Generator with adequate capacity for operating lift, water pump, lighting in common areas, stair and at least six light points, six fan points in each apartment in case of power failure.
- 1 (one) standard quality lift from reputed manufacturers with capacity of 8 passengers.
- Best quality water pumps with standby facilities.
- Veranda railing and grill according to the design of the Architect.
- One Sub-station of adequate capacity.



## Location Map



**CIRCLE**  
HOLDINGS LTD.  
INNOVATION | INTELLIGENCE | INTEGRITY

### Corporate Office

House # 57/C, Road #15/A, Dhanmondi R/A, Dhaka-1209

Tel: +88-02-55029316-21

Mob (Sales): 01713 047986, 01730 057284, 01713 047987

E-mail: chl\_75@yahoo.com

Web: www.circleholdingsbd.com

CIRCLE  
**Anchor Bay**



# About Us

**C**ircle Holdings Ltd. named as **CHL** was established in 2006 with a mission & a new vision to put itself in the forefront of development activities in housing sector. For better living in Bangladesh, being a developing country, is running far behind, particularly in the field of Real Estate, compared to developed countries and have a tremendous potentiality to improve by taking intensive and co-ordinate planning for planned growth of cities and townships to accommodate the growing population by using our limited land, resources and technology.

**CHL** started functioning as developer and construction with a team of highly experienced Architects, Engineers and other related professionals with a wide range of experience in real estate service and direction.

We are committed to provide high quality services. We believe that our dedication, commitment, technical superiority, experienced human resources and collective management efforts will ensure design, quality, accuracy and timely of works.



# Ground Floor



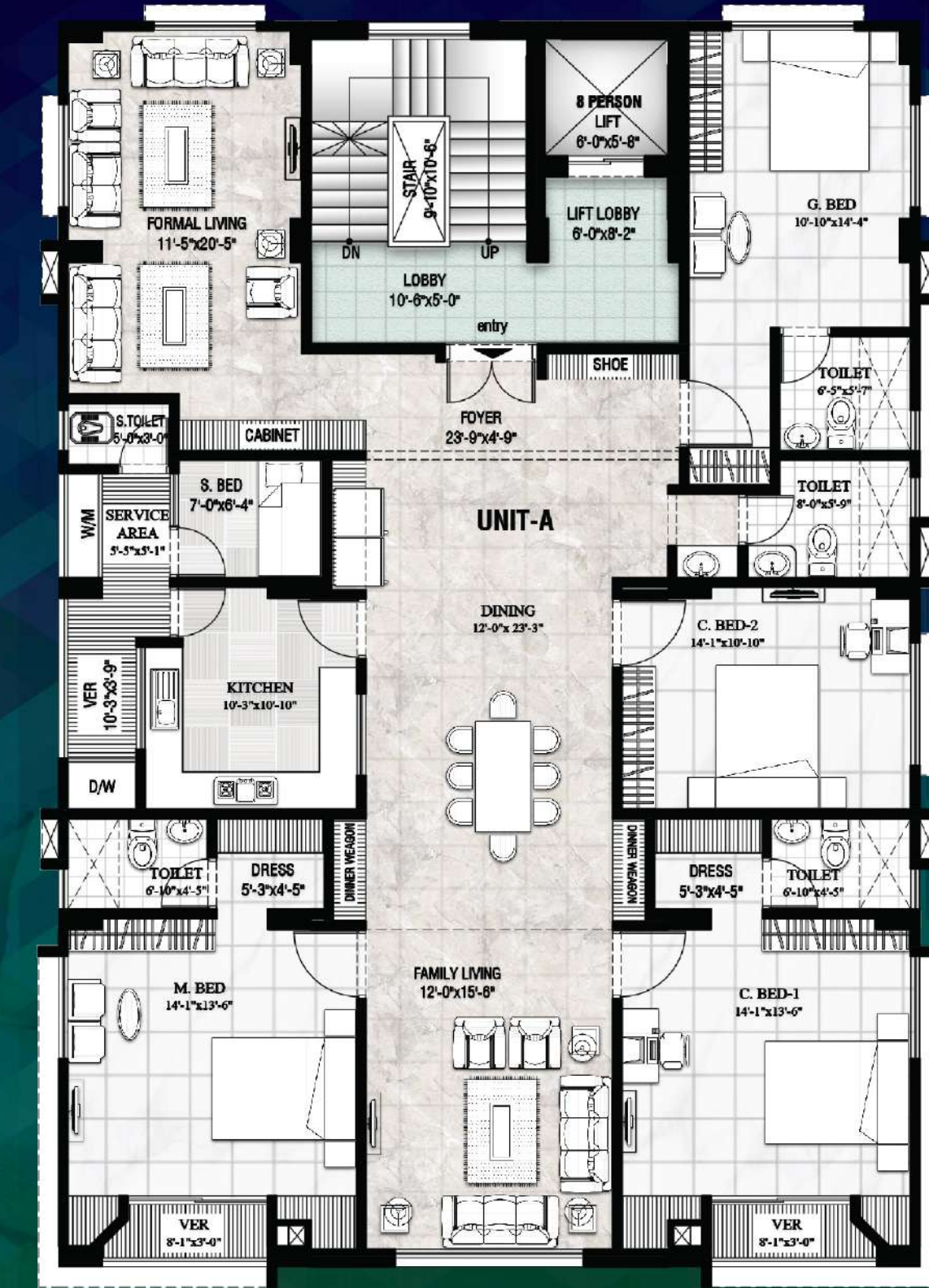
# 1st to 4th Floor



Unit-A 1350 sft

Unit-B 1350 sft

# 5th to 8th Floor (Single Unit)



Unit-A 2700 sft